



OVER THE RAINBOW



SPECIFICATIONS

Length: 35.00 metres (114' 10")

Beam: 6.00 metres (19' 8")

Draft: 2.50 metres (8' 2")

Number of crew: 5

Built: 1930

Refit: 2004

Builder: Dickie & Son's Bangor

Naval architect:

Flag: British

Hull construction: Wood

Hull configuration:

Air conditioning

EQUIPMENT

Engines: Gardner 2 x 230 CV

Cruising speed: 10

Fuel consumption: 80 Litres/Hr

ACCOMMODATION

Number of cabins: 4

Cabin configuration: 2 Double, 2 Twin

Bed configuration: 2 Convertible

Number of guests: 10

WATER SPORTS

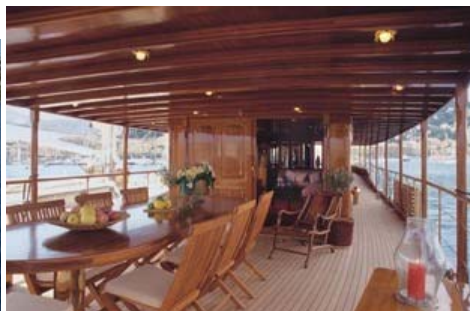
Tenders + toys: Williams 3,8m

2 kayaks

Waverunner

Fishing gear...

"Over the rainbow" was built in 1930, completely in wood. More than a yacht, "Over the rainbow" is a piece of art. You will be taken in the world of Jean-Michel Folon, who gave the yacht a second life. You will make the most unforgettable voyage across the Mediterranean Sea.



Exterior 2

Outside Deck



Salon



Salon Other view



Dinning area



Dinning Area Other view



Master



Master - other view



Double Cabin



Double Cabin



Convertible twin up to 4 guests



Bathroom



Bathroom 2



deck



Wheelhouse



Back

This document is not contractual. All specifications are given in good faith and offered for informational purposes only. The publisher and company do not warrant or assume any legal liability or responsibility for the accuracy, completeness, or usefulness of any information and/or images displayed. Yacht inventory, specifications and charter prices are subject to change without prior notice. None of the text and/or images used in this brochure may be reproduced without written consent from the publisher.

Castlemain

45 Avenue Pasteur 06600 Antibes France
Gsm (33)(0)6 07 82 27 41 - Tel (33)(0)4 93 34 14 14
annie@castlemain.eu www.castlemain.eu